

# LinkWare™

## Cable Test Management Software

*In today's fast-paced, networked world, certification and cable test management software plays a critical role in your business, whether you're a cabling contractor who delivers certification reports or the network owner who needs the assurance that the cabling plant is properly installed. Managing and reporting the cabling infrastructure test data can be complicated and time-consuming without the right solution. Now there's a new, more powerful way to see and manage the cabling infrastructure test data – with Fluke Networks' new LinkWare™ Cable Test Management Software.*

*LinkWare Software is included with Fluke Networks' OptiFiber™ Certifying OTDR, DSP-Series and OMNIScanner® Series cable testers and is available as a free download from the Fluke Networks website.*



### Bring it all together

- Manage copper and fiber test results with a single software application that supports all OptiFiber, DSP-Series and OMNIScanner testers.
- Deliver professional, customized, graphic reports in a common format for all Fluke Networks cable testers
- Ensure standards compliance with the ability to configure and print TIA 606-A documentation
- New drag and drop feature makes it easier to manage and organize multiple projects
- Count on compatibility with major CMS (Cable Management Software) applications
- Increase productivity with simple user interface and time-saving features

### Now – Manage all your test results with a single software application

The ability to manage test results data from multiple testers with one single software application has major advantages – and they're yours with an upgrade to LinkWare. It makes project setup much simpler for all OptiFiber, DSP-Series and OMNIScanner testers by helping you quickly organize, edit, view, print, save or archive test results by job site, customer, campus building and

more. You can merge test results into an existing LinkWare database and then sort, search and organize by any number of data fields or parameters. And you can count on your data integrity to be secure. Any data uploaded to your computer with LinkWare ensures that the results you store came from the tester's memory. Simply standardize on one test results database program and convert all existing job records by importing data files created with ScanLink™ or CableManager™ software.

### Maximize your tester inventory – and get professional results

LinkWare Software makes it easy to use a variety of testers on one job – and it makes you look good in the process. You can easily customize your job reports and import results from multiple Fluke Networks testers. No more patched-together collections of mixed formats and results. With Linkware Software, your job reports have the professional look that reflects the quality of your work. At the same time, LinkWare lets you get the most from your tester inventory and investment. So you can be more productive, more professional – every day – on every job.

**Get a comprehensive view of the copper and fiber cabling infrastructure.**

## Create professional custom reports quickly and easily

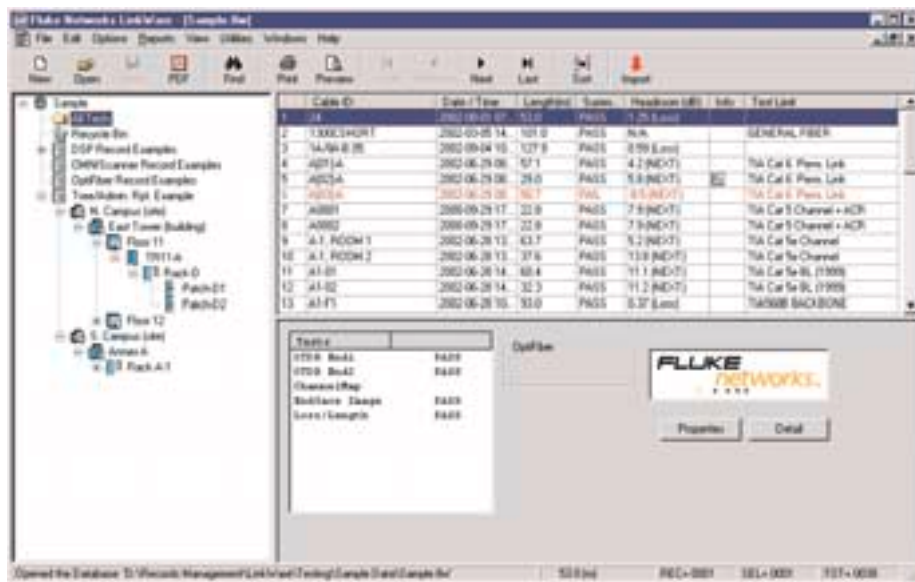
LinkWare Software prints professional, graphical reports with color graphs depicting the measured test parameters. You can choose which parameters to print and the order in which graphs appear. Reports can also be customized with your company logo.

## Gain extensive data management capabilities for OptiFiber™ Certifying OTDR

LinkWare brings together all the critical information you need in one printed report that you can give to your customer. It integrates bi-directional loss/length certification results, OTDR analysis trace, ChannelMap™ link diagram, power meter measurements and fiber endface images from both ends of a the link in one report showing your customers a comprehensive view of the fiber plant. No other fiber test solution documents the fiber infrastructure so completely and easily. And LinkWare emulates the OptiFiber Certifying OTDR so you can study and analyze traces in the office.

## Integrate your test results database with CMS and labeling software packages

LinkWare Software is compatible with CMS (Cable Management Software) and labeling software programs. This makes it easier to maintain a comprehensive cable management system while adhering to the revised TIA/EIA 606-A standard. LinkWare is compatible with major CMS applications including docIT® from Tempo®, Planet® from Planet Associates®, and The CLEAR Edge. Use any third-party program to generate and print the Cable IDs for the job. LinkWare processes these lists and lets you download the list to the OptiFiber, and DSP-4300 via the Multimedia Card. You can view or print test reports stored in LinkWare from these Cable Management Software systems. For more information, visit [www.flukenetworks.com/linkware](http://www.flukenetworks.com/linkware).



## Ordering information

LinkWare is available free from our web site at [www.flukenetworks.com/linkware](http://www.flukenetworks.com/linkware). Once your work is done, you can give this powerful application to your customers so they can have instant access to the data electronically.

**Note:** LinkWare replaces the DSP-CMS CableManager software, all CMS and Scanlink files are compatible with the new LinkWare software. SimpliFiber, CertiFiber and PentaScanner are not yet supported by release 1.1 of LinkWare; these products will be supported by a future release of LinkWare.

## Fluke Networks brings you Network SuperVision

Fluke Networks is committed to providing innovative Network SuperVision Solutions. From innovative technology and tools that comply with new standards, to responsive service and training to help you grow your business, Fluke Networks helps you keep pace in today's fast-moving, networked world by keeping our eye on the future for you. That's Network SuperVision. That's Fluke Networks' promise to you.

### NETWORK SUPERVISION

**Fluke Networks, Inc.**  
P.O. Box 777, Everett, WA USA 98206-0777  
(800) 283-5853 Fax (425) 446-5043

**Western Europe**  
00800 632 632 00, +44 1923 281 300  
Fax 00800 225 536 38, +44 1923 281 301  
Email: [info-eu@flukenetworks.com](mailto:info-eu@flukenetworks.com)

**Canada** (800) 363-5853 Fax (905) 890-6866  
**EEMEA** +44 1923 281 300 Fax +44 1923 281 301  
**Other countries call** (425) 446-4519  
Fax (425) 446-5043

**E-mail:** [fluke-assist@flukenetworks.com](mailto:fluke-assist@flukenetworks.com)  
**Web access:** <http://www.flukenetworks.com>

©2002 Fluke Networks, Inc. All rights reserved.  
Printed in U.S.A. 10/2002 1780088 D-ENG-N Rev A